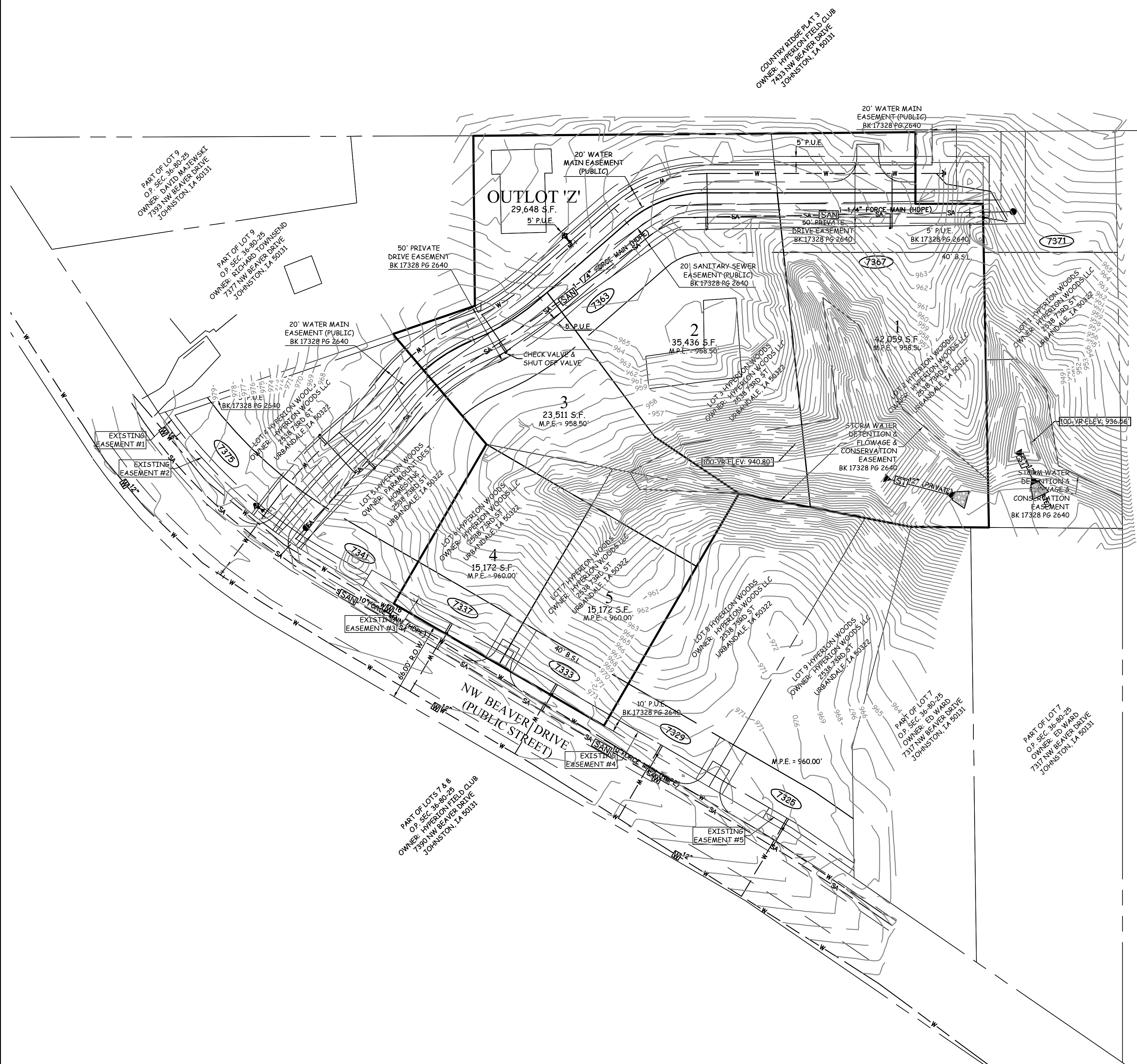


PRELIMINARY PLAT OFFICIAL RE-PLAT OF HYPERION WOODS LOTS 2, 3, 6, 7, & OUTLOT 'Z'

Sheet 2 of 2



UTILITY NOTES

1. SANITARY SERVICES SHALL BE 1 1/2" HDPE.
2. WATER SERVICE SHALL BE 1" COPPER PIPE.
3. WATER SERVICE SHALL BE LIVE TAP.

BENCHMARK

CITY OF JOHNSTON BENCHMARK #12
MONUMENT DESCRIPTION: STANDARD CONTROL MONUMENT IN CONCRETE CYLINDER, STAMPED "CITY OF JOHNSTON, IOWA BENCHMARK NO. 12". THE MONUMENT IS LOCATED IN THE GRASS, SOUTHWEST OF THE INTERSECTION OF MERLE HAY ROAD AND NW BEAVER DRIVE.

ELEVATION-----944.54'

FIRM DESIGNATION

COMMUNITY PANEL NUMBER: 190745 0004D, JULY 19, 2000
ZONE 'X'. AREA DETERMINED TO BE OUTSIDE 500-YEAR FLOOD PLAIN

LEGEND

- | | |
|--|-----------------------------|
| EXISTING/PROPOSED | |
| — PLAT BOUNDARY | — ST 18" STORM SEWER & SIZE |
| — SAN 8" SANITARY SEWER & SIZE | — W 8" WATER MAIN & SIZE |
| ○ MANHOLE | ● STORM INTAKE |
| ⊕ FIRE HYDRANT | ⊕ VALVE |
| △ F.E.S. | ▲ F.E.S. |
| — 990 EXISTING CONTOURS | — 990 PROPOSED CONTOURS |
| — * * * SILT FENCE OR APPROVED FILTRATION SOCK | |

COOPER CRAWFORD & ASSOCIATES, L.L.C. CIVIL ENGINEERS

475 S. 50th STREET, SUITE 800, WEST DES MOINES, IOWA 50265
PHONE: (515) 224-1344 FAX: (515) 224-1345

DATE: 5-7-2020
REVISIONS:

SCALE: 1"=50'
APPROVED: --- INITIALS: --- AS-BUILT: ---

PRELIMINARY PLAT
HYPERION WOODS

JOB NUMBER
**CC
2336**
SHEET
2 OF 2

